

KIOSK PRINTER

SK1 Series



SK1-21



- Compact and light weight
- Max.200mm/sec. high speed printing
- ϕ 120mm paper roll holder

SK1-22



- Low profile and small foot print
- Drop-in paper bucket
- Paper thickness from 60 to 150 μ m

SK1-24



- Front paper loading
- Vertical operation
- Wide operating temperature -20 to 60°C

Specifications

Model	SK1-2X series
Printing method	Direct line thermal
Resolution	8dots/mm (203dpi)
Number of dots	432 / 448dots
Printing / paper width	54/58mm, 56/60mm
Paper thickness	60 to 150 μ m
Printing speed	Max.200mm/sec.
Interface	RS232C + USB2.0
Font	8x16, 12x24 dots
Character type	PC437/850/852/857/858/860/863/865/866, WPC1252
Barcode	JAN8/13, CODE39, ITF, CODABAR, CODE128, UPC-A/E
2D Barcode	QR, Maxicode, Micro PDF-417, PDF-417, DataMatrix
Cutter	Full and Partial cut (Command selectable)
Sensor	Paper empty, Black mark, Label gap, Paper near end
Power supply	24VDC \pm 5%
Operating condition	-20 to 60°C, 20% to 80%RH (Non-condensing)
Reliability	150Km, 200million pulses/Print head, 1,500,000cuts/Cutter
Dimensions/weight	SK1-21 : 104×145.5×85.4mm (W×D×H)/525g
	SK1-22 : 104×140.3×69.7mm (W×D×H)/580g
	SK1-24 : 99×118×123mm (W×D×H)/750g
Safety standard	CE, FCC, VCCI

Applications

Parking systems

Durable and reliable unit for self service parking



Self service Kiosk

Small foot print and compact unit fitting into slim design kiosk



Tickets/Receipts

Applicable for thick paper and widely open head makes it easy to replace the paper.



Coupons

A large variety of printing layout and fonts are applicable to various scences of usages.



SK1-3X/4X series

3&4 inch

SK1-31



SK1-32



SK1-41



- Compact and light weight
- Max.200mm/sec. high speed printing
- ϕ 120mm paper roll holder

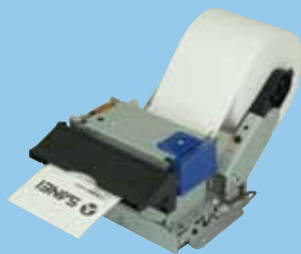
- Low profile and small foot print
- Drop-in paper bucket
- Paper thickness from 60 to 150 μ m

- Compact and light weight
- Max.150mm/sec. high speed printing
- Wide operating temperature -20 to 60°C

Specifications		Specifications	
Model	SK1-3X series	Model	SK1-4X series
Printing method	Direct line thermal	Printing method	Direct line thermal
Resolution	8dots/mm (203dpi)	Resolution	8dots/mm (203dpi)
Number of dots	432 / 448 / 576 / 640dots	Number of dots	576 / 640 / 832dots
Printing / paper width	54/58mm, 56/60mm, 72/80mm, 80/83mm	Printing / paper width	72/80mm, 80/83mm, 104/112mm
Paper thickness	60 to 150 μ m	Paper thickness	60 to 120 μ m
Printing speed	Max.200mm/sec.	Printing speed	Max.150mm/sec.
Interface	RS232C + USB2.0	Interface	RS232C + USB2.0
Font	8x16, 12x24 dots	Font	8x16, 12x24 dots
Character type	PC437/850/852/857/858/860/863/865/866, WPC1252	Character type	PC437/850/852/857/858/860/863/865/866, WPC1252
Barcode	JAN8/13, CODE39, ITF, CODABAR, CODE128, UPC-A/E	Barcode	JAN8/13, CODE39, ITF, CODABAR, CODE128, UPC-A/E
2D Barcode	QR, Maxicode, Micro PDF-417, PDF-417, DataMatrix	2D Barcode	QR, Maxicode, Micro PDF-417, PDF-417, DataMatrix
Cutter	Full and Partial cut (Command selectable)	Cutter	Full and Partial cut (Command selectable)
Sensor	Paper empty, Black mark, Label gap, Paper near end	Sensor	Paper empty, Black mark, Label gap, Paper near end
Power supply	24VDC \pm 5%	Power supply	24VDC \pm 5%
Operating condition	-20 to 60°C, 20% to 80%RH (Non-condensing)	Operating condition	-20 to 60°C, 20% to 80%RH (Non-condensing)
Reliability	150Km, 200million pulses/Print head, 1,500,000cuts/Cutter	Reliability	150Km, 200million pulses/Print head, 1,000,000cuts/Cutter
Dimensions/weight	SK1-31 : 127x145.5x85.4mm (WxDxH)/630g SK1-32 : 128x174.5x74.2mm (WxDxH)/730g	Dimensions/weight	SK1-41 : 160.9x159.3x88.1mm (WxDxH)/885g
Safety standards	CE, FCC, VCCI	Safety standards	CE, FCC, VCCI

Combination

Mechanisms



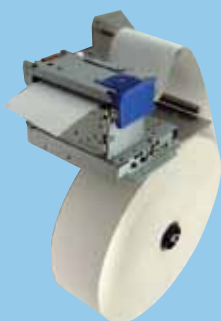
Bezel



LED Bezel



Paper presenter



Large paper holder



Tilt type



Vertical type



SE1-21 (2 inch)



SE1-31 (3 inch)



SE1-41 (4 inch)

Uniquely creative, uniquely responsive to your needs.

Options



Bezel
BZ-SK1



LED Bezel
LB-SK1



Presenter
PR-SK1



Presenter
PR-SK1-41



Power supply
SA1-3A240



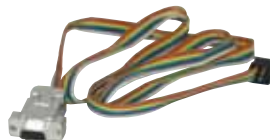
Large paper holder
HL1 (φ 200mm)



Large paper holder
HL2 (φ 200mm)



Large paper holder
HL3 (φ 200mm)



Serial cable
CB-SK1-S2

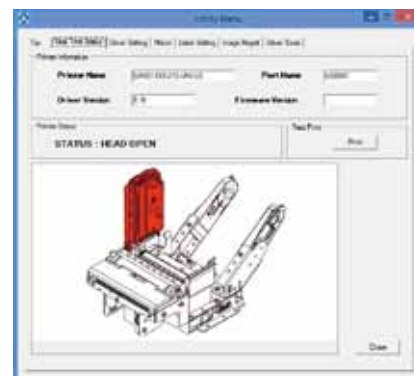


Power cable
CB-SK1-D1

Download service

- Windows drivers :
http://www.sanei-elec.co.jp/e_downloads/drivers.html
- Utility drivers :
http://www.sanei-elec.co.jp/e_downloads/utilitydriver.html
- Virtual COM drivers :
http://www.sanei-elec.co.jp/e_downloads/virtualcomdriver.html
- SDK and CUPS drivers :
Contact local distributor or Sanei Electric Inc.

Remote Status Monitor



Windows is registered trademark of Microsoft corporation in the United States and other countries.
CUPS name and logo are trademarks of Apple Inc.
All specifications are subject to change without notice.

 **SANEI ELECTRIC INC.**

www.sanei-elec.co.jp

Headquarters :

2-61-1 Ikebukuro, Toshima-ku, Tokyo 171-0014, Japan
Phone: 81-3-3986-1188 Fax: 81-3-3988-5876

