

# SANEI SK1-21/31/32/41 from **star**

## Compact, Open Frame Ticket, Receipt & Label Printers

**SK1-21** 200mm/sec 56 / 60mm paper width model  
Mechanism dimensions 104 x 145.5 x 85.4mm

**SK1-31** 200mm/sec. 58 / 60 / 80 / 83mm model  
Mechanism dimensions 127 x 145.5 x 85.4mm

**SK1-32** 200mm/sec. 54 / 56 / 72 / 80mm "Drop-In" Clamshell model  
Mechanism dimensions 128 x 174.5 x 74.2mm

**SK1-41** 150mm/sec. 80 / 83 / 112 mm paper width model  
Mechanism dimensions 160.9 x 159.3 x 88.1mm.



Star Micronics is pleased to introduce Sanei's compact range of open frame printers which completes the Star portfolio of printing solutions for limited space enclosures.

Despite their entry-level price, these kiosk printers offer the user valuable, simple-to-use features.

Fast, high quality 203 dpi print at speeds up to 200 mm/second.

USB and Serial **Dual interface**.

The "Crocodile open mouth" style paper loading and spring loaded paper roll holders allow the kiosk builder to consider the simpler choice of front operating access only.

**Flexible mounting options** include the vertical orientation 90° position for the thinnest of vertical footprints matching today's latest generation of slimline kiosks for the SK1-21 and SK1-31 models.

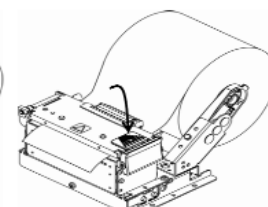
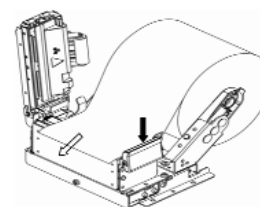
**Simple paper loading** using standard receipt style paper rolls with an outside diameter up to 120mm and the option of using either a 12.5mm or 25mm core. (The 25mm default is simply changed to 12.5mm by removing the outer concentric circle on the roll holder). **Sensors** include Near End, Paper End, Reflection and Gap. 200 outside diameter roll option (HL02 for SK1-21/31 HL03 for SK1-41).

**Versatile operating environment** (-20 to 60 degrees)

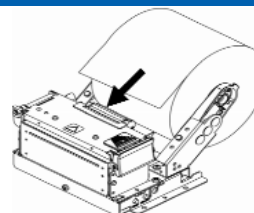
There are a range of specific drivers available for various operating systems. The open frame printers are ESC/POS™ compatible and therefore compatible with a wide range of software. (Star users note: These printers are not included on the StarPRNT Intelligence Software Support CD).

**Star's PS60 power supply option with power cable** option works perfectly with the small power conversion cable (CB-2k1-D3)) which must also be ordered for the SK1-21, SK1-31 & SK1-32 models. There is a separate power supply for the SK1-41 (SA1-3A240) which does not include the local power cable which must be supplied by the customer.

### One button "Crocodile Snap" Style Print Head Access



### Semi Automatic, Front Access Paper Loading



Paper presenter



Large paper holder



Tilt type

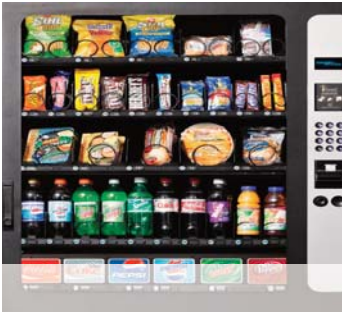


Vertical type



www.Star-EMEA.com





# ➔ Specifications



Specifications	
Model	SK1-3X series
Printing method	Direct line thermal
Resolution	8dots/mm (203dpi)
Number of dots	432 / 448 / 576 / 640dots
Printing / paper width	54/58mm, 56/60mm, 72/80mm, 80/83mm
Paper thickness	60 to 150µm
Printing speed	Max.200mm/sec.
Interface	RS232C + USB2.0
Font	8x16, 12x24 dots
Character type	PC437/850/852/857/858/860/863/865/866, WPC1252
Barcode	JAN8/13, CODE39, ITF, CODABAR, CODE128, UPC-A/E
2D Barcode	QR, Maxicode, Micro PDF-417, PDF-417, DataMatrix
Cutter	Full and Partial cut (Command selectable)
Sensor	Paper empty, Black mark, Label gap, Paper near end
Power supply	24VDC ± 5%
Operating condition	-20 to 60°C, 20% to 80%RH (Non-condensing)
Reliability	150Km, 200million pulses/Print head, 1,500,000cuts/Cutter
Dimensions/weight	SK1-31 : 127×145.5×85.4mm (W×D×H)/630g SK1-32 : 128×174.5×74.2mm (W×D×H)/730g
Safety standards	CE, FCC, VCCI

SK1-21



- Compact and light weight
- Max.200mm/sec. high speed printing
- φ 120mm paper roll holder

SK1-31



- Compact and light weight
- Max.200mm/sec. high speed printing
- φ 120mm paper roll holder

SK1-32



- Low profile and small foot print
- Drop-in paper bucket
- Paper thickness from 60 to 150µm

SK1-41



- Compact and light weight
- Max.150mm/sec. high speed printing
- Wide operating temperature -20 to 60°C

**Receipt length** on media from 59µm to 75µm thick.  
50 to 350mm (Paper 70µm or more)  
50 to 250mm (Paper less than 70µm)  
Maximum length - 350mm  
(Page memory & Form overlay)

Specifications		Specifications	
Model	SK1-3X series	SK1-4X series	
Printing method	Direct line thermal	Direct line thermal	
Resolution	8dots/mm (203dpi)	8dots/mm (203dpi)	
Number of dots	432 / 448 / 576 / 640dots	576 / 640 / 832dots	
Printing / paper width	54/58mm, 56/60mm, 72/80mm, 80/83mm	72/80mm, 80/83mm, 104/112mm	
Paper thickness	60 to 150µm	60 to 120µm	
Printing speed	Max.200mm/sec.	Max.200mm/sec.	
Interface	RS232C + USB2.0	RS232C + USB2.0	
Font	8x16, 12x24 dots	8x16, 12x24 dots	
Character type	PC437/850/852/857/858/860/863/865/866, WPC1252	PC437/850/852/857/858/860/863/865/866, WPC1252	
Barcode	JAN8/13, CODE39, ITF, CODABAR, CODE128, UPC-A/E	JAN8/13, CODE39, ITF, CODABAR, CODE128, UPC-A/E	
2D Barcode	QR, Maxicode, Micro PDF-417, PDF-417, DataMatrix	QR, Maxicode, Micro PDF-417, PDF-417, DataMatrix	
Cutter	Full and Partial cut (Command selectable)	Full and Partial cut (Command selectable)	
Sensor	Paper empty, Black mark, Label gap, Paper near end	Paper empty, Black mark, Label gap, Paper near end	
Power supply	24VDC ± 5%	24VDC ± 5%	
Operating condition	-20 to 60°C, 20% to 80%RH (Non-condensing)	-20 to 60°C, 20% to 80%RH (Non-condensing)	
Reliability	150Km, 200million pulses/Print head, 1,500,000cuts/Cutter	150Km, 200million pulses/Print head, 1,000,000cuts/Cutter	
Dimensions/weight	SK1-31 : 127×145.5×85.4mm (W×D×H)/630g SK1-32 : 128×174.5×74.2mm (W×D×H)/730g	SK1-41 : 160.9×159.3×88.1mm (W×D×H)/885g	
Safety standards	CE, FCC, VCCI	CE, FCC, VCCI	

## Star Micronics EMEA

Star House, Peregrine Business Park, Gomm Road, High Wycombe, Bucks. HP13 7DL, UK  
Tel: +44 (0) 1494 471111 • Fax: +44 (0) 1494 473333 • Email: Sales@Star-EMEA.com

