

SELF/2000

Compact, attractive and scalable contactless payment solution for your self-service business

- Accept alternative QR code based-payment thanks to its embedded camera
- Improve the customer experience with best-in-class features such as color screen, camera and sound alert
- Simplify solution integration, operation and scalability
- Cut complexity in payment security implementation with PIN on Glass (PoG)



Part of the Self series, the Self/2000 is the best-in-class secured contactless terminal, which has been designed to growth your self-service business (vending, EV charging...).

Highest security

PCI PTS 5.x certified, the Self/2000 meets the highest and latest hardware and software mandatory requirements. It is also complies with SRED and provides flexible options with Open Protocol modules. Including the PIN on Glass capability (PIN on Line verification where available), the Self/2000 is the best solution to face the PSD2 European regulation.

Using a secure payment device will increase the consumer's trust and will preserve your brand's reputation.

Contactless payment

Self/2000 facilitates Tap 'n Pay transactions initiated by contactless EMV cards, NFC based smart phone digital wallets (Apple Pay, Google Pay, etc.) and consumer wearables (Apple watch, Samsung watch, etc).

Simple UI with sound alerts

The solution provides a simple and easy-to-use customer interface with the color and capacitive touch screen. By connecting an external speaker, the Self/2000 supports sound alerts and vocal guidance for enhanced usability.

Highly ruggedized

Due to its robust design (IK09) and protection against water (IP65) and dust (IPxx), the Self/2000 can be used in any indoor kiosk and any qualified outdoor kiosk.

Easy mechanical integration

Thanks to its compact size and design, the Self/2000 can be integrated into a machine from the front or from the rear, depending on the machine design or the installer's choices. Compliant with EVA EPS (Standard Door Module) standard, the Self/2000 can easily replace any payment terminal compliant with these specification (e.g. IUC180B)



Wide connection capabilities

With the addition of MDB interfaces (for vending, parking meters and other use cases), Bluetooth, 4G connectivity, the Self/2000 extends its connection capabilities and enables to add optional modules to enhance flexibility.

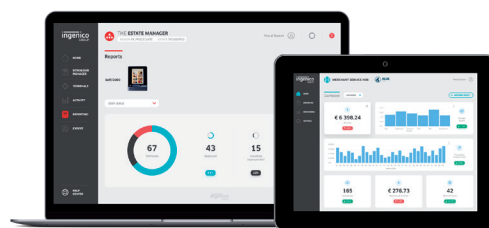
Seamless Ingenico's estate management

The Self/2000 works seamlessly with The Estate Manager solution, allowing integrators & operators to easily use and maintain the fleet of devices without complexity. It also allows them to remotely perform software updates and deliver day-to-day support for a hassle-free experience.

Future-proof investment

Ingenico's software components for self-service solutions from Telium 2 (including the MDB, EXE vending protocols, etc.) is compatible to work with the Self Series and its TETRA platform to facilitate the continuity of current business and scale further.

The Self/2000 is supported by our Cloud Services



Processor	• Application & Crypto processor	• Cortex A5	●
Memory	• Internal • External	• 512 MB Flash, 512 MB RAM • microSD up to 32GB	● ●
OS		• Telium TETRA	●
SAM		• 2 SAM ID-000	●
Card readers	• Contactless	• EMV Level 1 compliant / ISO 14443 A/B/B'	●
Display	• Colour	• 3.2" backlit, QVGA portrait mode (240x320)	●
Touchscreen	• Capacitive	• Ruggedized with 6mm glass thickness	●
Keypad	• Virtual	• PIN on Glass	●
Audio	• Buzzer • Polyphonic sound (wav reader)	• Mono • With external loudspeaker (not provided)	● ●
Camera	• In front of the device	• 2MP - fixed focal (Honeywell library embedded)	●
Terminal connectivity	• Wired • Wireless	• Ethernet 10/100, 1 x RJ45 • 4G (with fallback) • Bluetooth 4.2	● Option Option
Terminal connections	• USB • Serial • Sound • MDB	• 1 x USB Slave (USB-B connector) • 2 x USB Host (USB-A connector) • 2 x RS232 (RJ11 connector) • 1 x 2 PIN connector for external loudspeaker • 1 x MDB Master + 1 x MDB Slave	● ● ● Option

Power supply	• External power supply • POWER BOX (in slot #1) • MDB BOX (in slot #1)	• 9-16 V DC - 2 PIN connector • 10-45V DC • 10-45V DC	● Option Option
Terminal size	• EVA EPS • Overall W x H x D mm	• Standard Door Module • 85 x 107 x 99.2 mm (3.3x4.2x3.9")	● ●
Weight		• 340 g (12 oz)	●
Environment	• Operating Temperature • Storage Temperature • Operating Humidity	• -20°C to +70°C (-4°F to 158°F) • -20°C to +70°C (-4°F to 158°F) • 95% non-condensing at +55°C (131°F)	● ● ●
Material	• Plastic	• Compliant fire & smoke standard (EN 62 368)	●
IP	• Ingress protection	• IP 65	●
IK	• Shock protection	• IK 09	●
Accessory		• 2 PIN to 6 PIN adapter cable for standard 12V PSU • EVA EPS mounting plate • USB cables, serial cables • Standard PSU 12V DC	● Option Option ●
Security		• PCI PTS 5.1 certified • PIN on Glass certified	●



www.ingenico.com

ingenico
a Worldline brand